



Academy Drive

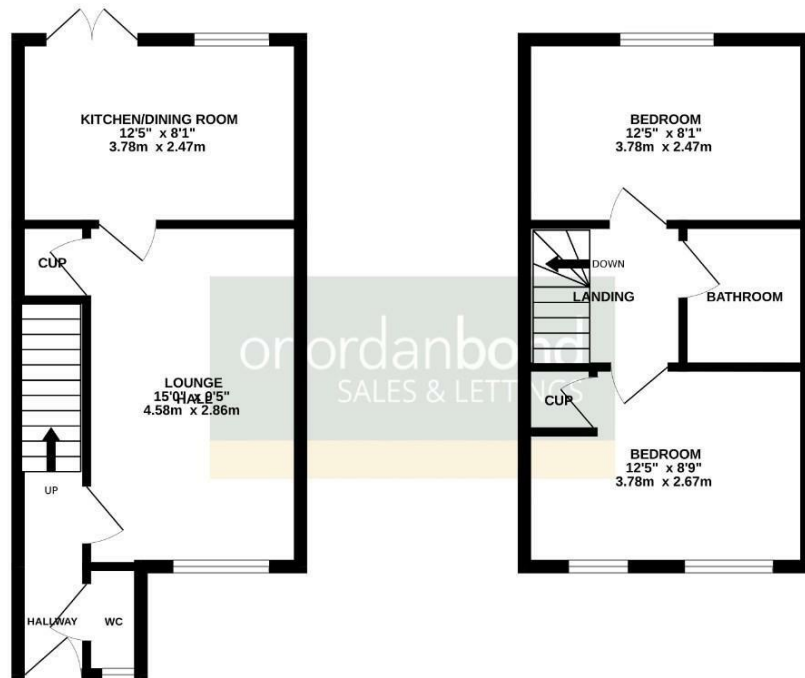
Kingsthorpe, Northampton

oriordanbond
SALES & LETTINGS



GROUND FLOOR

1ST FLOOR



TOTAL FLOOR AREA : 599 sq.ft. (55.6 sq.m.) approx.

Whilst every attempt has been made to ensure the accuracy of the floorplan contained here, measurements of doors, windows, rooms and any other items are approximate and no responsibility is taken for any error, omission or mis-statement. This plan is for illustrative purposes only and should be used as such by any prospective purchaser. The services, systems and appliances shown have not been tested and no guarantee as to their operability or efficiency can be given.
Made with Metagor. 02/24

Academy Drive

Kingsthorpe

NN2 7AY

PRICE £249,995

A modern and well presented two bedroom family home, located in the popular Scholars Green development in Kingsthorpe, within walking distance to local amenities, schools and a ten minute drive to Northampton train station.

Accommodation comprises entrance hall, cloakroom/WC, sitting room with under stairs storage cupboard and kitchen/dining room with French doors to the rear garden. From the first floor landing are two double bedrooms serviced by a three-piece family bathroom. Outside is a well maintained and improved rear garden with patio area leading to laid to lawn and rear access. To the front of the property is off road parking for two cars. Further benefits include uPVC double glazing and gas radiator heating. (A/599/S)

Additional information

- Council Tax Band: B
- Energy Efficiency Rating: B

Viewing

Viewing strictly by appointment – details below

Disclaimer

O'Riordan Bond Estate Agents Limited has not tested apparatus, equipment, fittings or services and so cannot verify they are in working order. The buyer is advised to obtain verification from their solicitor or surveyor.

O'Riordan Bond Kingsthorpe Sales

01604 722007

kingsthorpe@oriordanbond.co.uk

